

1897



Village of
CARPENTERSVILLE
 FOCUS NEWSLETTER

Building a Better Tomorrow . . . Today

Summer 200

New Dominick's, Menards & Walgreens Bring Jobs, Shopping, & Tax Revenue

Approximately three years ago, Walgreens opened at the southwest corner of Route 25 and Lake Marian Road. That building started what has been the most significant increase in new retail development in nearly 20 years. During 2001, there was more than 250,000 square feet of new retail development in the Village. Menard's (160,000 square feet) and Dominick's (65,000 square feet) were the two largest projects. Other significant development along Randall Road include restaurants like McDonald's, Wendy's and Subway, and services such as Blockbuster, a cellular store, banks and clinics.

This year promises to be a strong year for development as well, with a new 75,000 square foot meat trimming facility in the Springhill Center for Commerce and Industry. Current employment at this facility is close to 100, with plans for expansion that could increase employment to 150. Additional new occupancies in the Springhill Center for Commerce and Industry are currently in process. Additionally, the Hills/McCanna building on Maple is now occupied by the Cross Container Corporation. This 100,000 square foot facility had been vacant for almost three years.

Although the bulk of new retail development is occurring along Randall Road, construction has started on a new retail development at the northeast corner of Huntley Road and Tay River Drive. This 10,000 square foot building is likely to be anchored by Rosati's Pizza. Around the corner from this location on Route 31 is a new office under construction for Doomis Construction Company.

These developments are increasing both revenue and employment opportunities within the Village. Additional development is expected along Randall Road remains, as well as other areas of the Village.

Flag Day Ceremony

Friday, June 14, 6:00 PM

Veterans Memorial Garden at Carpenter Park



Music
 poetry
 color guard
 proclamation
 presentation of memorial wreath
 21 gun salute
 taps



Complimentary cake and coffee served by the Ladies Auxiliary of Carpentersville VFW Post 5915

Residents having a worn or tattered flag are invited to bring it to the ceremony so that it may be honorably retired by members of the VFW

VFW or American Legion Posts wishing to participate in this event are invited to call the Village Hall, (847) 426-3439, or Trustee Judy Sigwalt at (847) 426-6965.

July 31 Is Deadline for Purchasing Village Vehicle Stickers, Dog Tags

July 31 is the deadline for purchasing and displaying your 2002-2003 Village vehicle sticker.

For faster service, please remember to bring the pre-printed form with corrected information when you come to the Village Hall to purchase your stickers. Pre-printed forms with last year's information were mailed to Village residents several weeks ago. Blank forms will be available in the Finance Department for those who need them.

July 31 is also the deadline for purchasing 2002-2003 dog tags. The fee is \$3.00 per dog. Village ordinance requires a tag for all dogs six months of age and older.

Questions? Call the Finance Department at (847) 551-3476.

To serve you better . . .

For your convenience the Finance Department is open earlier in the morning, in addition to offering evening hours one day a week.

Finance Department hours are:

Monday, Tuesday, Wednesday, Friday- 8:30 AM-5:00 PM;

Thursday- 8:30 AM-8:00 PM





**The Village Hall
will be closed
on the
following
holidays:**

4th of July
Thursday, July 4

Labor Day
Monday, September
2

Thanksgiving
Thursday & Friday,
November 28 & 29

Christmas
Tuesday & Wednesday,
December 24 & 25

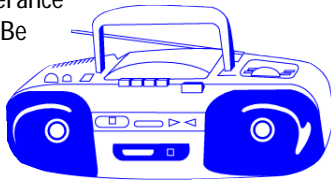
Love Your Music? Great! But Not Everyone Else Does

Summertime means enjoying the front porch or backyard, spending time in the parks, and driving from place to place with the windows down and the volume on the car stereo up.

Music is often part of summer activities. But it's important to remember that music is meant to be enjoyed only by those who choose to listen to it -- not played so loudly that it disturbs nearby neighbors or motorists.

Therefore the Carpentersville Police Department has a **zero tolerance policy for loud radios, bands, car stereos, and car noises**. Village ordinance prohibits noise that can be heard more than 50 feet from its origin.

"Calls to the Police Department complaining about loud music or noise always increase dramatically during the summer months," says Lt. Michael Gillette. "Our policy is zero tolerance for noise complaints. Be advised that we will issue tickets and fines to violators."



Fines associated with noise complaints is \$100. In addition, loud noise from a vehicle can carry a minimum \$75 fine and a citation against the driver's license if the officer issues a Uniform Traffic Complaint.

The Police Department urges you to be a good neighbor and save yourself some money in the process. Enjoy your music, but enjoy it at a reasonable sound level.

4 Words to the Wise: Click It or Ticket!

Every year more than 42,000 people die in traffic crashes and another 3 million are injured.



Carpentersville has seen its share of traffic deaths and injuries to people who were friends, family members and co-workers. That's why the Police Department reminds you to be sure to buckle up whenever you are in a moving vehicle.

Remember that drivers are responsible for seeing that their passengers are buckled up, and that infants and children are secured into car seats appropriate for their height, weight and age.

School's Out -- Drive Safely!

Summer vacation for local school children has already begun. That means that children happy to be playing outside may forget to look before chasing a ball into the street, riding their bike through an intersection, or rollerblading into the street. In the excitement of the moment, they can easily forget to watch for you, so you will need to be extra vigilant in watching for them.



Bicyclists -- remember that the law requires you to obey traffic laws, some of which are specific to bicyclists. Bicycle Rules of the Road are available free of charge at the Police Department.

Motorists -- The days are longer, the weather's warmer, and the neighborhood kids are out in force. Please use extra caution when backing out of your driveway, and when driving on residential streets where an eager youngster might dart between parked cars or appear out of nowhere on a bike or trike.

Parents -- summer is a great opportunity to spend time with your children. Enjoy some favorite activities together, take the time to get to know their friends, be sure you know who they are spending time with, where they are and when you can expect them home.

Summer is a happy time for kids. Make sure it's a safe time, too.

News Briefs

Yardwaste: Curbside yardwaste collection is available now through November 30. Yardwaste should be placed at the curb in kraft paper bags for pickup on the same day as your regular household refuse. No sticker is required.

Leaf burning: No open burning of leaves, trash, refuse, paper, or any other material is permitted any time, anywhere in the Village.

Garage sales:

Village ordinance permits each household to hold a garage sale twice a year. Remember that garage sale signs are prohibited on public property such as parkway areas, street corners, street lights and street posts. Your cooperation is appreciated.



Police Department Plans Roadside Vehicle Safety Checks

In order to protect your safety and the safety of other motorists, the Carpentersville Police Department and the Illinois State Police will be conducting random vehicle safety checks on Saturday, June 29. The safety checks will be conducted on Route 31 between 8:00 PM and 1:00 AM on that date.

Among the items the police will be checking for are:

- current vehicle insurance
- seat belt usage
- mechanical safety
- DUI

Questions? Call the Police Department at (847) 551-3481.

Need to know more about building code requirements and/or code violations?

Building code regulations and requirements can sometimes be technical and difficult to understand. If you have been notified that you have a building code violation, or if you are aware of a home or business that you think may have code violations, call the Village Building Department at (847) 551-3478. Village inspectors will be happy to discuss the situation, explain the requirements, and provide other helpful information as needed.

Do You Have A Backyard Swimming Pool? Read On . . .

Whether you are planning to install a new pool or open an existing one, remember that there are several Village ordinances that govern the location, care and safety of swimming pools.

- If you are installing a new above or below ground pool, contact the Building Department at 551-3478 for a list of rules and requirements.
- Always have an adult present when children are playing in your pool.
- Never allow anyone to dive into shallow water.
- Use floatation devices when appropriate.
- Keep pool equipment in good working order.
- ALWAYS secure your swimming pool when it is not in use. Young children have a strong sense of curiosity about swimming pools.

Be vigilant security t curiosity becoming family tragedy.



Is Your Home Harboring An Illegal Sump Pump?

A sump pump is a wonderful thing. It keeps your basement dry in wet weather and protects all those treasures you've been storing from the ravages of a flooded basement.

But is your sump pump legal? If your sump pump is connected to the sanitary sewer through floor drains or drain pipes, you are in violation of the Village's sewer use code. During wet conditions an illegal sump pump hookup feeds storm water into the public sanitary sewer main, which overloads the sewer system and causes backups. The excess storm water fed into the system by illegal connections overloads the sanitary sewer mains, causing sewage to back into basements.

Illegal sump pump connections also overload the Village's wastewater treatment plant with millions of gallons of storm water fed into the system through illegal sump pump hookups, which result in higher water treatment cost for everyone.

You can help prevent basement flooding and keep wastewater treatment costs down by disconnecting any sump pump that is connected to the sanitary sewer system.

If you have any questions about your sump pump hookup or the best way to re-direct sump pump discharge, the Public Works Department will be glad to conduct an inspection free of charge and make recommendations. Contact Bob Cole at (847) 551-3476, ext. 222 or Bill Boone at (847) 551-3490.

Qualifying Senior Citizens Invited to Apply to Have Home Painted by Volunteers

Carpentersville senior citizen residents are invited to apply to have homes painted by Paint-a-Thon volunteers from the Greater Cardinal Community Paint-a-Thon. The homes of qualifying seniors will be painted in early September. The home must be owned by an income-qualified senior citizen 65 years of age or older. The deadline for applying is mid-July. Call 551-3262 for an application or further information.



Important Phone Numbers:

Village Hall:
426-3439

Community Development
(Code Enforcement or Building Department)
551-3478

Engineering Division
551-3480

Public Works:
551-3476

Water Facility:
551-3492

Sewer Facility:
551-3490

Underground Division
551-3493

Street Division:
551-3494

Finance/Water Billing
551-3476

Police or Fire
Emergency: 9-1-1

Police
Non-Emergency:
551-3481

Fire
Non-Emergency:
426-2131

AFTER HOURS OR
WEEKEND
SEWER BACKUPS OR
WATER PROBLEMS
REQUIRING VILLAGE
RESPONSE:
428-8784

Village of Carpentersville Water Quality Report 2001

Este informe contiene informacion muy importante. Tradusalo o hable con alguien que lo entienda bien.

This year as in years past, your tap water has met all United States Environmental Protection Agency (USEPA) and state drinking water health standards. The Carpentersville Water Department vigilantly safeguards its groundwater supply, and we are proud to report that the department had no violations of a contaminant level or of any other water quality standard in the previous year. This report summarizes the quality of water that we provided in 2001, including details about where your water comes from, what it contains, and how it compares to standards set by regulatory agencies. We are committed to providing you with this information because informed customers are our best allies.

If you have any questions about this report please contact Dean Gorter Monday through Friday from 7:00am to 3:30pm at (847) 551-3492. Concerns regarding the Carpentersville Water System can be addressed at village board meetings. Meetings are held at 7:30 pm on the first and third Tuesdays of each month, at the Carpentersville Village Hall 1200 Besinger Drive.

Three wells provide Carpentersville with an adequate ground water supply. Wells 5, 6 and 7 are located at various locations within the village limits. Water is pumped from the wells to the Water Treatment Plant where it is filtered, softened, chlorinated and fluoridated before it is pumped to the distribution system for consumption.

Currently there are no potential primary contamination sources located within the minimum 400' setback zone of each well.

Drinking water, including bottled water, may reasonably be expected to contain at least small amounts of some contaminants. The presence of contaminants does not necessarily indicate the water poses a health risk. More information about contaminants and potential health effects can be obtained by calling the USEPA'S Safe Drinking Water Hotline (1-800-426-4791).

Some people may be more vulnerable to contaminants in drinking water than the general population. Immuno-compromised persons such as persons with cancer undergoing chemotherapy, persons who have undergone organ transplants, people with HIV \ Aids or other immune system disorders, some elderly, and infants can be particularly at risk from infections. These people should seek advice about drinking water from their health care provider. USEPA / CDC guidelines on appropriate means to lessen the risk of infection by cryptosporidium and other microbial contaminants are available from the USEPA's Safe Drinking Water Hotline (1-800-426-4791)

The sources of drinking water (both tap and bottled water) include rivers, lakes, streams, ponds, reservoirs, springs and wells. As water travels over the surface of the land or through the ground, it can dissolve naturally occurring minerals and radioactive material, and can pick up substances resulting from the presence of animals or from human activity.

Possible contaminants consist of:

- Microbial Contaminants, such as viruses and bacteria, which may come from sewage treatment plants, septic systems, agricultural livestock operations and wildlife;
- Inorganic contaminants, such as salts and metals, which can be naturally occurring or results from urban stormwater runoff, industrial or domestic wastewater discharges, oil and gas production, mining or farming;
- Pesticide and herbicides, which may come from a variety of sources such as agriculture, urban stormwater runoff and residential uses;
- Organic chemical contaminants, including synthetic and volatile organic chemicals, which are by-products of industrial process and petroleum production, and may also come from gas stations, urban stormwater runoff and septic systems; and
- Radioactive contaminants, which may be naturally occurring or be the results of oil and gas production and mining activities.

In order to ensure that tap water is safe to drink, USEPA prescribes regulations that limit the amount of certain contaminants in water provided by public water systems. (FDA) regulations established limits for contaminants in bottled water, which must provide the same protection for public health.

2001 Water Quality Data/Definitions of Terms

Maximum Contaminant Level Goal (MCLG): The level of a contaminant in drinking water below which there is no known or expected risk to health. MCLGs allow for a margin of safety.

Maximum Contaminant Level (MCL): The highest level of a contaminant that is allowed in drinking water. MCLs are set as close to the MCLGs as feasible using the best available treatment technology.

Level Found: This column represents an average of sample result data collected during the CCR calendar year. In some cases, it may represent a single sample if only one sample was collected.

Range of Detections: This column represents a range of individual sample results, from lowest to highest that were collected during the CCR calendar year.

Date of Sample: If a date appears in this column, the Illinois EPA requires monitoring for this contaminant less than once per year because the concentrations do not frequently change. If no date appears in the column, monitoring for this contaminant was conducted during the CCR calendar year.

Action Level (AL): The concentration of a contaminant which, if exceeded, triggers treatment or other requirements which a water system must follow.

Treatment Technique TT: A required process intended to reduce the level of a contaminant in drinking water.

nd: Not detectable at testing limits

n/a: Not applicable.

Detected Contaminants

Contaminant (units of measure)	MCLG	MCL	Level Found	Range of Detection	Violation	Date of Sample	Typical Source of Contamination
Inorganic Contaminants							
Barium (ppm)	2	2	0.013	0.013 - 0.013		06/02/98	Discharge of drilling waste; Discharge from metal refineries; Erosion of natural deposits.
Copper (ppm)	1.3	AL=1.3	0.530	0 exceeding AL		09/30/99	Corrosion of household plumbing systems; Erosion of natural deposits; Leaching from wood preservatives.
Fluoride (ppm)	4	4	1.010	1.010 - 1.010		06/02/98	Water additive which promotes strong teeth; Erosion of natural deposits; fertilizer and aluminum factories.
Lead (ppb)	0	AL=15	8	1 exceeding AL		09/30/99	Corrosion of household plumbing systems; Erosion of natural deposits.
Disinfection/Disinfectant By Products							
TTHMs [Total Trihalomethanes] (ppb)	n/a	100	48.500	40.000 - 57.000			By-product of drinking water chlorination.
Unregulated Contaminants							
Bromodichloromethane (ppb)	n/a	n/a	11.500	10.000 - 13.000			By-product of drinking water chlorination.
Bromoform (ppb)	n/a	n/a	2.000	nd - 4.000			Discharge from manufacturing plants; Used to dissolve dirt and grease.
Chloroform (ppb)	n/a	n/a	28.000	11.000 - 45.000			Used as a solvent for fats, oils, rubber, resins; A cleansing agent; Found in fire extinguishers.
Dibromochloromethane (ppb)	n/a	n/a	7.000	2.000 - 12.000			Used as chemical reagent; An intermediate in organic synthesis.
Sulfate (ppb)	n/a	n/a	80.300	80.300 - 80.300		06/02/98	Erosion of naturally occurring deposits.
State Regulated Contaminants							
Sodium (ppm)	n/a	n/a	170.000	170.000-170.000		06/02/98	Erosion of naturally occurring deposits; Used as water softener

Unit of Measurement: - Definitions: **ppm** = Parts per million, or milligrams per liter;
ppb = parts per billion, or micrograms per liter

Water Quality Data Table Footnotes

Unregulated Contaminants: A maximum contaminant level (MCL) for this contaminant has not been established by either state or federal regulations, nor has mandatory health effects language. The purpose for monitoring this contaminant is to assist USEPA in determining the occurrence of unregulated contaminants in drinking water, and whether future regulation is warranted.

Sodium: There is not a state or federal MCL for sodium. Monitoring is required to provide information to consumers and health officials that are concerned about sodium intake due to dietary precautions. If you are on a sodium-restricted diet, you should consult a physician about this level of sodium in the water

2001 Violation Summary Table

No drinking water quality violations were recorded during 2001

2001 Source water Assessment Summary

As of the date of this report, this summary has not been completed. The Illinois EPA must complete all source water assessments by May 2003. As this assessment becomes available, our supply will summarize the results and incorporate the information into this report, as required.

Further information on our community water supply's source water assessment is available on the USGS web site at <http://il.water.usgs.gov> or by calling Groundwater Section of the Illinois EPA at (217) 785-4787

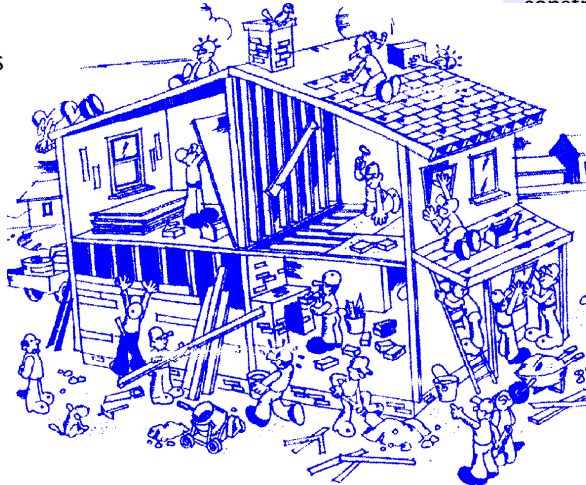
Planning a New Pool, Deck or Fence? Call Us First!

If the the longer days and warmer temperatures have you thinking about your own backyard pool, a new fence, a garage, room addition, or other major improvements, be sure to contact the Building Department FIRST at 551-3478 to see whether a permit is required for your project.

Small repairs such as fixing a leaky roof or replacing an electrical outlet do not require a permit. But, for your own protection and safety, permits are required for larger projects so that our building inspectors can check the work in progress and be sure that it is being completed according to Village code requirements and nationally accepted safety standards. Regardless of whether a contractor is involved or not, be sure to contact the Building Department before any work is begun. Almost all home improvement projects require a permit. The only way to know for certain if you will need a permit is to call the Building Department and ask.

Projects that require a building permit include, but are not limited to:

- remodeling
- room additions
- garages
- decks
- patio
- roofs
- siding
- pools
- driveways
- sidewalks
- furnaces
- fireplaces
- major plumbing or electrical work.



“Remember: a building permit is important protection for YOU. When Village personnel check work-in-progress they can verify that the work is being done legally and safely.

Some words to the wise about building permits

When thinking about a home improvement project, contacting the Building Department should be FIRST on your list of things to do.

Why? Because Village building codes may affect the location or size of a garage, room addition, pool, fence, patio or deck.

Building codes sometimes specify the types of pipe, electrical wiring or other construction materials that are used.

When you are hiring a contractor, don't take his word for it that he will obtain the permit. If work begins and no permit has been issued, you, the homeowner, will be responsible for resulting fines and penalties. And in some cases, the work may have to be un-done and redone in order to comply with Village building code requirements.

**School is out --
please drive
carefully**



This newsletter is published by
The Village of Carpentersville
1200 L. W. Besinger Drive
Carpentersville, IL 60110
Web site: <http://vil.carpentersville.il.us>

Mark Boettger, Village President

Paul Folster, Trustee
Nancy Moore, Trustee
John Noverini, Trustee
Karen Roekner, Trustee
Jim Schuldt, Trustee
Judith A. Sigwalt, Trustee

Dawn Wucki-Rossbach, Interim Village Manager

Kaye Lowman, Newsletter Editor

Summer 2001

POSTAL PATRON LOCAL
Carpentersville, IL 60110

PRESORTED
STANDARD
U.S. Postage
PAID
PERMIT NO. 59
Carpentersville, Illinois