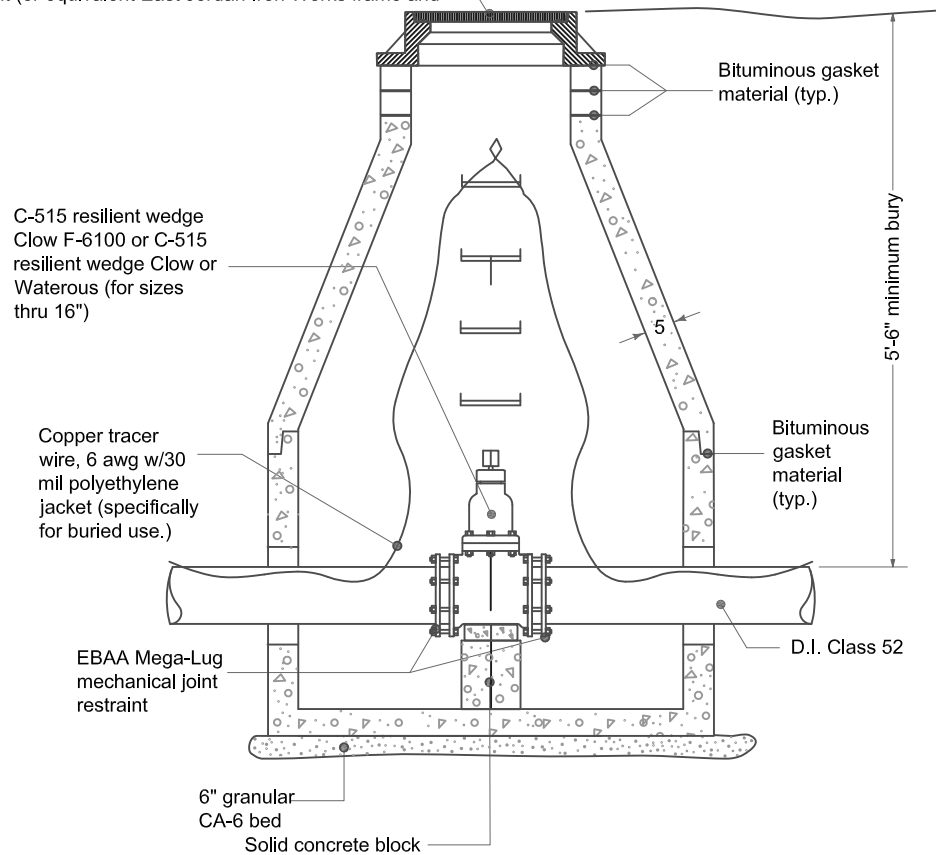


Neenah Catalog No. R-1713 manhole frame, Type "B" self-sealing solid lid w/ "CARPENTERSVILLE WATER" imprint (or equivalent East Jordan Iron Works frame and lid)



General Notes:

1. All dimensions are in inches unless otherwise specified.
2. Adjustment: Three adjustment rings totaling 8" in height may be used. No more than two (2) of those rings may be precast concrete. The top ring in paved areas with crown adjustments shall be rubber.
3. Steps at 16" O.C. copolymer polypropylene plastic with a continuous 1/2-inch steel reinforcement.
4. Water main shall be Class 52 ductile iron pipe with cement coating C-104.
5. Fittings shall be ANSI-AWWA C153/A21.53 SSB-COMPACT.
6. Eccentric cones shall not be used unless underground conditions require them and they are accepted by the Village Engineer.
7. Tracer wire shall be connected to the side of the vault no more than 16" below grade.

DIAMETER OF WATER MAIN	VAULT DIAMETER
8 and under	48
10 and over	60

Valve Vault Type A

W-1 012908
Revised 071309